

# *City of Brisbane*

## *Agenda Report*

To: City Council via City Manager  
From: Fanny Yang via Clay Holstine, City Manager  
Subject: Priority Conservation Area Application  
Date: July 17, 2014

**Purpose:**

Present the Resolution and Priority Conservation Area application packet to the Council.

**Recommendation:**

Request adoption of Resolution No. 2014-32 approving the application of San Bruno Mountain and corresponding areas as PCAs

**Background:**

Established in 2007, the Priority Conservation Area (PCA) Program is a collaborative initiative between the Association for Bay Area Governments (ABAG), the Metropolitan Transportation Commission (MTC), and the Bay Area Air Quality Management District (BAAQMD) identifying key, regional, spaces in the Bay Area for environmental conservation and protection.

The PCA program encourages collaboration between public agencies, local governments, and nonprofit organizations. More than 100 PCAs were nominated and on July 17, 2008, the first set of priority conservation areas was designated. Nominations are reviewed by ABAG staff, local governments, and regional committees.

**Discussion:**

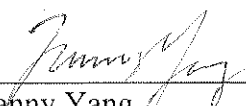
Designating San Bruno Mountain and corresponding areas as a priority conservation area is an environmentally, responsible move preserving one of the Bay Area's natural landmarks. The mountain offers not only recreational activities for local residents, but also provides ecologically, critical habitats for the region's wildlife.

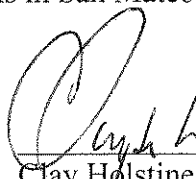
**Fiscal Impact:**

There are grant opportunities such as the One Bay Area Grant (OBAG) that specifically allocates funds for conservation and preservation efforts in designated PCAs.

**Measure of Success:**

The City of Brisbane will join other participating Bay Area cities in designating environmentally, significant, regional areas, adding to the total of eight PCAs in San Mateo County.

  
\_\_\_\_\_  
Fanny Yang  
Administrative Intern

  
\_\_\_\_\_  
Clay Holstine  
City Manager

## RESOLUTION 2014-32

### **A RESOLUTION OF THE CITY COUNCIL OF THE CITY OF BRISBANE SUPPORTING THE APPLICATION OF SAN BRUNO MOUNTAIN AND CORRESPONDING AREAS AS A PRIORITY CONSERVATION AREA**

**WHEREAS**, in 2007 the Association for Bay Area Governments (ABAG) in partnership with the Metropolitan Transportation Commission (MTC) and the Bay Area Air Quality Management District (BAAQMD) formed the Focusing Our Vision or “FOCUS” program to strengthen environmental protection and conservation of natural lands in the San Francisco Bay Area;

**WHEREAS**, Priority Conservation Areas (PCAs) are areas of regional significance providing communities and inhabiting natural wildlife with essential natural resources in addition to scenic, recreational, and ecological values for the area;

**WHEREAS**, San Bruno Mountain stands as an open-space island surrounded by urban development and its 2,326 acres of mountainous landscape contains natural environments critical to the ecosystems of wildlife and plants;

**WHEREAS**, San Bruno Mountain is the repository of three endangered butterflies, numerous local, regional, and national rare plants;

**WHEREAS**, San Bruno Mountain offers recreational trails, waterways, bike paths, and state parks to surrounding communities;

**WHEREAS**, access to and across the mountain is presently limited;

**WHEREAS**, there is potential for the expansion of trails and wildlife corridors connecting San Bruno Mountain to San Francisco Bay as well as to other parks, greenways, and open areas from all sides of the mountain;

**WHEREAS**, the proposed San Bruno Mountain PCA includes San Bruno Mountain and other adjacent properties including but not limited to Crocker Park trails and portions of the Brisbane Baylands providing opportunities for enhanced public access, wildlife corridors, and connectivity to San Francisco Bay;

**WHEREAS**, increased connectivity between different regions of San Bruno Mountain and surrounding communities will promote recreational and restoration efforts for the included areas;

**WHEREAS**, the FOCUS program currently designates a total of seven PCAs in the County of San Mateo;

**WHEREAS**, adoption of a PCA does not change the zoning, general plan, or other land use designations of the geographic area encompassed by the PC with local jurisdictions retaining full land use control;

**WHEREAS**, designation of San Bruno Mountain as a regional priority conservation area will open grant funding opportunities for future conservation, restoration, and recreational projects dedicated to the preservation of the region;

**NOW, THEREFORE, BE IT RESOLVED**, by the Council of the City of Brisbane that the Council supports the application of San Bruno Mountain and corresponding areas as a regional priority conservation area.

---

W. Clarke Conway, Mayor

I hereby certify that the foregoing Resolution 2014-32 was duly and regularly adopted at a regular meeting of the Brisbane City Council on July 17, 2014 by the following vote:

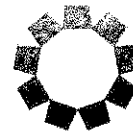
AYES:

NOES:

ABSENT:

---

Sheri Marie Spediacci  
City Clerk



**ABAG**

Date: April 2, 2014  
To: Regional Planning Committee  
From: Laura Thompson and Mark Shorett ABAG staff  
Subject: **Priority Conservation Area Program Update**

### **Summary**

Staff is requesting that the RPC recommend that the Executive Board adopt an updated application process and criteria for Priority Conservation Areas (PCAs). This memo and its attachments provide context for the proposed update and introduces new application guidelines and criteria.

### **Background**

The Priority Conservation Area (PCA) program was initiated in 2007 to identify Bay Area open spaces that: 1) provide regionally significant agricultural, natural resource, scenic, recreational, and/or ecological values and ecosystem functions; 2) are in urgent need of protection due to pressure from urban development or other factors; and 3) supported by local consensus. The PCAs were established at the same time as the locally nominated Priority Development Areas (PDAs) through the FOCUS program. Together, the PDAs and PCAs have informed the development of Plan Bay Area and implementation initiatives such as the One Bay Area Grant (OBAG).

The PCA program helped spur collaboration between local governments, public agencies, and nonprofit organizations to nominate more than 100 PCAs. Nominations were reviewed by staff, regional committees, and local governments. The ABAG Executive Board adopted the first set of PCAs on July 17, 2008.

The first PCA projects were funded in 2013 and 2014 through OBAG. OBAG provided \$5 million in funding for a competitive program in San Francisco, San Mateo, Santa Clara, Alameda, and Contra Costa counties managed by the Coastal Conservancy. Another \$5 million in OBAG funding was divided between the North Bay county Congestion Management Agencies—each of which managed its own program.

During meetings in 2012 and 2013, the ABAG Regional Planning Committee and Executive Board requested that staff revise the PCA program to provide greater specificity about the qualities and function of different types of PCAs—using an approach more in line with the Place Types utilized to categorize PDAs. In addition, RPC and Executive Board members stressed the importance of urban parks and green spaces. This feedback was formalized in Plan Bay Area, which directs staff to update the program to define the role of different kinds of PCAs and ensure that local jurisdictions are consulted on updates to individual PCAs.

## PCA Program Update

As part of the broader Plan Bay Area Implementation effort, over the past six months ABAG staff worked with local jurisdictions, the ABAG administrative committee and stakeholders to develop a proposed PCA program update. The update addresses the Open Space and Farmland implementation area. The attachments to this memo provide more detailed guidelines for PCA nominations, review and adoption. These are summarized below.

### *Updated PCA Application Process and Requirements (Attachment 2)*

The proposed application process requires that PCA nominations include:

- 1) An adopted resolution of support from the jurisdiction(s) in which it is located
- 2) A map and text describing the general area and boundaries of the PCA
- 3) Selection of one or more of the PCA designations described below and text and supporting text and data
- 4) Discussion of the regional and local importance of the PCA

Following feedback from the RPC, staff will provide a revised application form for adoption by the Executive Board and sample resolution to assist applicants.

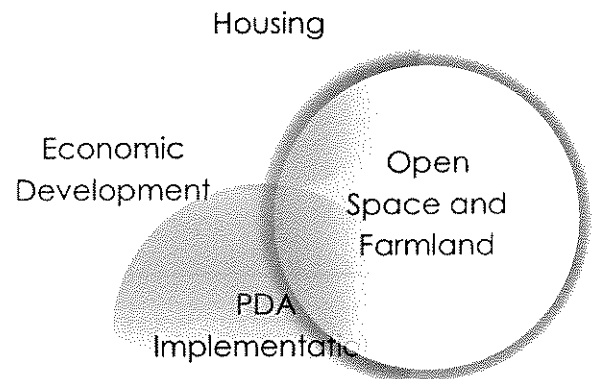
Sponsors of both existing and proposed PCAs are required to complete the application. Sponsors of existing PCAs can reference original applications to meet the first, second, and fourth requirements.

### *PCA Designations and Criteria (Attachment 3)*

The update introduces four categories to recognize the role of different kinds of PCAs in supporting the vitality of the region's natural systems, rural economy and human health:

- **Natural Landscapes**—areas critical to the functioning of wildlife and plant habitats, aquatic ecosystems and the region's water supply and quality. Examples: wetland restoration, riparian corridor protection.
- **Agricultural Lands**—farmland, grazing land and timberland that support the region's agricultural economy and provide additional benefits such as habitat protection and carbon capture. Example: conservation easements.
- **Urban Greening**—existing and potential green spaces in cities that improve community health, capture carbon emissions, address stormwater, and enhance the public realm.

Figure 1. **Plan Bay Area Implementation Focus Areas**



Example: urban portion of riparian corridors, potential sites for parks and community gardens.

- **Regional Recreation**—existing and potential regional parks, trails, and other publicly accessible recreation facilities. Examples: regional trail networks, areas for potential regional park expansion.

Benefits and potential co-benefits are identified for each designation (i.e. wildlife and plant habitat, agricultural economy). Applicants are required to discuss how the PCA provides these benefits—referencing data and maps. ABAG will provide resources (e.g. maps, databases, etc) to assist applicants in this process, drawing upon data published by federal and state sources as well as scientific research.

### *Timeline for New and Updated PCA Applications*

**April 2014:** PCA Program update—including Application Process and PCA Designations—recommended by the RPC to the Executive Board for adoption.

**May 2014:** PCA Program update adopted by Executive Board.

**June 1, 2014:** Beginning of PCA application period. New and existing PCAs must submit application. Existing PCAs can reference portions of previous PCA applications (i.e. adopted resolution of support by local jurisdiction) to meet relevant requirements.

**May 30, 2015:** Deadline for PCA applications. Existing PCA designations will be removed if no application has been filed.

**June 2015:** Following staff review, RPC recommends PCA nominations to the Executive Board for adoption

**July 2015:** Executive Board adopts PCA nominations recommended for adoption by the RPC.

### *Future funding sources*

The PCA update does not address funding. However, the designations are designed to position PCAs for both cross-cutting and targeted funding sources. For example, an urban greening and a regional recreation project might be eligible for different sources of targeted grant funding, but both may be eligible for a broad funding source supporting projects that improve public health while creating green space.

### Attachments

Attachment 1: PCA Program Overview

Attachment 2: Updated PCA Application Process and Requirements

Attachment 3: Proposed PCA Designations

## ATTACHMENT 1: OVERVIEW OF CURRENT PRIORITY CONSERVATION AREAS

### Overview of Current Priority Conservation Areas

There are currently 101 Priority Conservation Areas (PCAs) throughout the Bay Area. The PCAs were nominated by jurisdictions, park and open space districts and non-profit organizations. The first 98 were adopted by the ABAG Executive Board in 2008 and three additional PCAs adopted earlier in December 2013 as part of applications for One Bay Area Grant (OBAG) funding.

The intent of the PCA program is to identify Bay Area open spaces that: 1) provide regionally significant agricultural, natural resource, scenic, recreational, and/or ecological values and ecosystem functions; and 2) are in urgent need of protection due to pressure from urban development or other factors; 3) and are supported by local consensus. The PCAs are envisioned as a framework for directing future regional funding for acquiring open space and conservation easements.

Most PCAs were nominated by local jurisdictions, park districts, or open space districts. A handful were nominated by non-profit organizations such as land trusts. The majority are natural resource or regional recreation areas, with a smaller number of agricultural areas and urban greenways and riparian corridors.

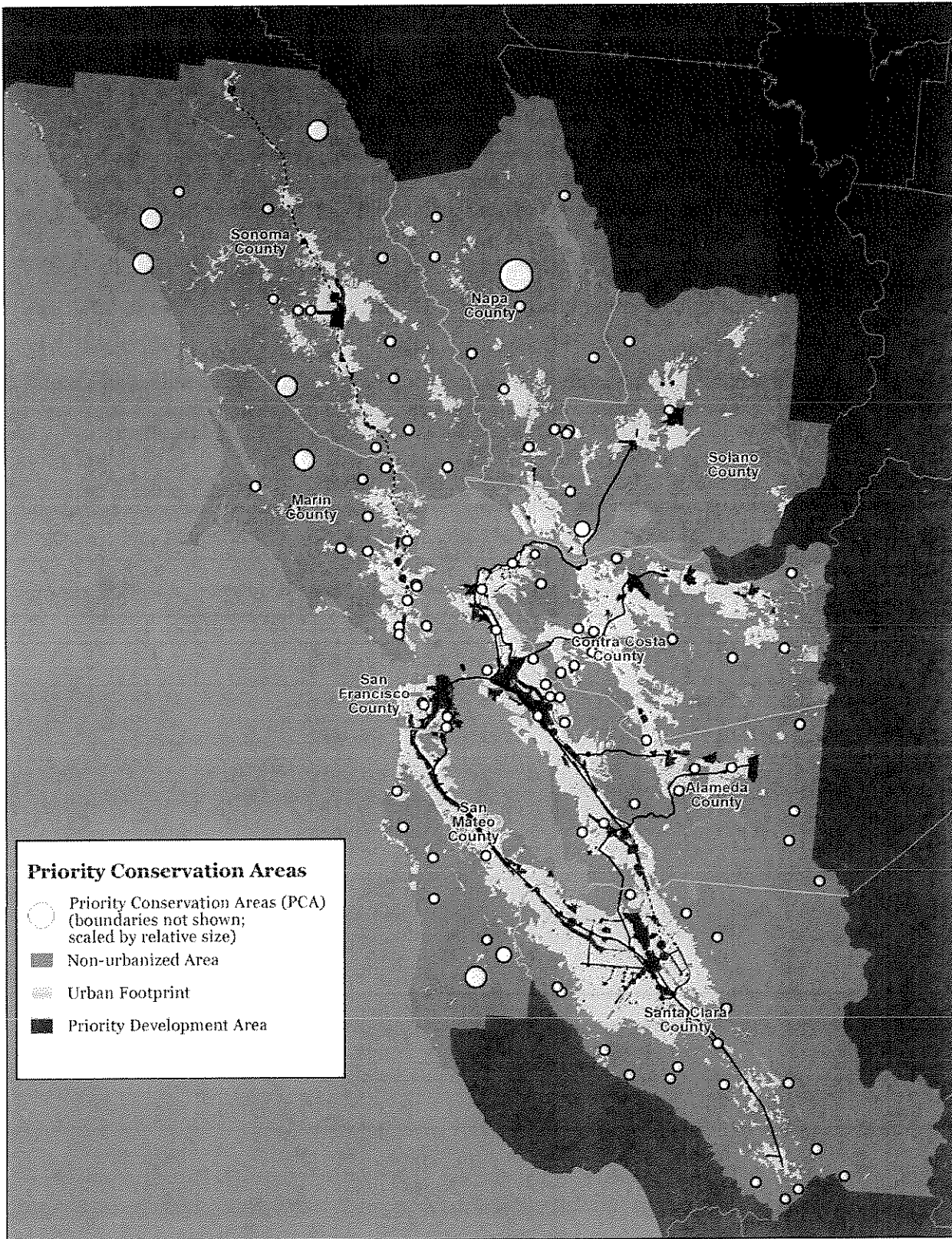
Map 1 shows PCAs throughout the region. The size of the dots representing each PCA reflects its relative size in acres. Table 1 shows the distribution of PCAs by County.

**Table 1. Distribution of PCAs by County**

County	Number of PCAs
Alameda	16
Contra Costa	13
Marin	14
Napa	9
San Francisco	4
San Mateo	7
Santa Clara	17
Solano	5
Sonoma	14
Multi-County	2
<b>Total</b>	<b>101</b>

ATTACHMENT 1: OVERVIEW OF CURRENT PRIORITY CONSERVATION AREAS

Map 1. Bay Area Priority Conservation Areas





## ATTACHMENT 2: PCA APPLICATION PROCESS AND REQUIREMENTS

### Updated PCA Nomination Process and Requirements

This attachment outlines the steps required for Priority Conservation Area nominations. Following adoption by the RPC, staff will formalize this proposed process into an updated application form for adoption by the Executive Board. The form will be posted to the ABAG website and disseminated to local jurisdictions and stakeholders.

#### 1. Complete Application Form

Each applicant must complete a full application including the following sections:

##### **Area Information**

- Proposed Name
- Description
- Location (include map and text description)
- Acreage

##### **Sponsor(s)**

- Lead jurisdiction/district/organization and staff contact
- Partner jurisdiction(s)/district(s)/organization(s) and staff contact

##### **Eligibility**

- Adopted resolution from City Council or Board of Supervisors of jurisdiction in which PCA is located
- PCA Type Designation
  - Selected Designation (Natural Resource Lands, Agricultural Lands, Urban Greening, or Regional Recreation)
  - Text, data and/or maps demonstrating how the PCA will provide the primary benefit of the relevant designation, as well as any additional co-benefits (*as determined by applicant*)

##### **Attachments**

- Copy of adopted City Council or Board of Supervisors resolution of support
- If any, support letters from partner agencies and organizations (*not required*)
- If any, additional data, mapping, supportive local policies or other materials documenting eligibility (*not required*)

#### 2. Submit application to ABAG staff for review

Applicants must submit the completed application to ABAG staff for review. Relevant staff will be posted on the ABAG website and noted on the application form. Staff will contact the applicants with any questions or requests for additional information.

#### 3. PCA Adoption

After confirming eligibility, staff will submit a recommendation to the ABAG Executive Board to adopt the PCA.

## ATTACHMENT 2: PCA APPLICATION PROCESS AND REQUIREMENTS

### Clarifications

- **Land Use Control.** Adoption of a PCA does not change the zoning, general plan designation, or other land use designation of the geographic area encompassed by the PCA. Local jurisdictions retain full control over land use decisions. ABAG does not have authority over land use.
- **Eligible Applicants.** Non-profit organizations, park districts, open space districts, and other entities can submit a PCA application as long as it includes an adopted resolution from the City Council or Board of Supervisors in which the PCA is located.
- **Removing or Modifying PCAs.** Jurisdictions seeking to remove an existing PCA do not need to take any action other than choosing not to submit a new application for that PCA.

## ATTACHMENT 2: PCA APPLICATION PROCESS AND REQUIREMENTS

### Clarifications

- **Land Use Control.** Adoption of a PCA does not change the zoning, general plan designation, or other land use designation of the geographic area encompassed by the PCA. Local jurisdictions retain full control over land use decisions. ABAG does not have authority over land use.
- **Eligible Applicants.** Non-profit organizations, park districts, open space districts, and other entities can submit a PCA application as long as it includes an adopted resolution from the City Council or Board of Supervisors in which the PCA is located.
- **Removing or Modifying PCAs.** Jurisdictions seeking to remove an existing PCA do not need to take any action other than choosing not to submit a new application for that PCA.

## Natural Resources Coalition Meeting Agenda

April 14, 2014

1. Check in

2. New Parks Director and Natural Resources Manager  
Responsiveness to issues

New Scientific Study permitting policy

3. Next Steps for our agenda  
MOUs

Weed ranger certification program/weeding in the parks

Coordination for Trail Maintenance

4. Other items

**ATTACHMENT 3: PROPOSED PCA DESIGNATIONS**

**Priority Conservation Area Designations**

This attachment introduces four Priority Conservation Area (PCA) designations and a set of measurable benefits provided by the PCAs.

Designations describe the primary function of a PCA. In some cases, PCAs with different designations include the same geographic area. For example, a riparian corridor designated as a Natural Landscape PCA may cross an Agricultural Lands PCA and Regional Recreation PCA.

**Benefits** describe specific types of habitats, health outcomes, and other objectives that the designated PCAs support. Each benefit is accompanied by at least one criterion as well as data sources for evaluating whether or not the PCA meets the criterion. Many PCAs will provide additional benefits beyond the primary ones listed for its designation. These are captured as co-benefits. Proposed PCAs are not required to list co-benefits, but these help describe its full impact.

**Table 1. Summary of Priority Conservation Area Designations**

PCA Designation	Primary Benefit(s)	Potential Co-Benefits	Examples
Natural Landscapes	<ul style="list-style-type: none"> <li>• Terrestrial (Land) Ecosystems</li> <li>• Aquatic Ecosystems</li> <li>• Water Supply and Quality</li> </ul>	<ul style="list-style-type: none"> <li>• Climate and Resilience</li> <li>• Compact Growth</li> <li>• Recreation</li> </ul>	<ul style="list-style-type: none"> <li>• Critical habitat areas</li> <li>• Wetlands targeted for restoration</li> <li>• Riparian Corridors</li> <li>• Watershed land protection</li> </ul>
Agricultural Lands	<ul style="list-style-type: none"> <li>• Agricultural Resources</li> <li>• Agricultural Economy</li> </ul>	<ul style="list-style-type: none"> <li>• Wildlife Habitat</li> <li>• Water Supply and Quality</li> <li>• Recreation</li> <li>• Climate and Resilience</li> <li>• Compact Growth</li> </ul>	<ul style="list-style-type: none"> <li>• Farmland or grazing land</li> <li>• Timberlands</li> </ul>
Urban Greening	<ul style="list-style-type: none"> <li>• Community Health</li> <li>• Recreation</li> <li>• Climate and Resilience</li> </ul>	<ul style="list-style-type: none"> <li>• Wildlife Habitat</li> <li>• Water Supply and Quality</li> <li>• Recreation</li> </ul>	<ul style="list-style-type: none"> <li>• Potential "edible park" sites (park + community garden)</li> <li>• Urban forest areas</li> <li>• Urban portion of riparian corridor</li> </ul>

*LEVINSON*

**ATTACHMENT 3: PROPOSED PCA DESIGNATIONS**

<p><b>Regional Recreation</b></p>	<ul style="list-style-type: none"> <li>• Recreation</li> </ul>	<ul style="list-style-type: none"> <li>• Wildlife Habitat</li> <li>• Water Supply and Quality</li> <li>• Climate and Resilience</li> <li>• Community Health</li> <li>• Compact Growth</li> </ul>	<ul style="list-style-type: none"> <li>• Regional trail network</li> <li>• Potential regional park sites</li> </ul>
-----------------------------------	--	--	---

**Table 2: Priority Conservation Area Benefits and Criteria**

Benefit	Criteria Required and (Optional)	Data Sources for Evaluation
Terrestrial (Land) Ecosystems	<ul style="list-style-type: none"> <li>• <u>Protects land within Conservation Lands Network (CLN)</u> <ol style="list-style-type: none"> <li>1. Essential, 2. Important, 3. Fragmented, or 4. For Further Consideration; or</li> </ol> </li> <li>• Protects Bay Area Critical Linkage</li> <li>• <i>(Protects Other Critical Habitat)</i></li> </ul>	<ul style="list-style-type: none"> <li>• Conservation Lands Network (CLN) <a href="http://www.bayarealands.org/explorer/">http://www.bayarealands.org/explorer/</a></li> <li>• USFWS Critical Habitat Portal <a href="http://ecos.fws.gov/crithab/">http://ecos.fws.gov/crithab/</a></li> <li>• Locally identified data</li> </ul>
Aquatic (Water) Ecosystems	<ul style="list-style-type: none"> <li>• <u>Protects wetlands identified in Baylands Ecosystem Habitat Goals; or</u></li> <li>• <u>Protects subtidal Habitat identified in Subtidal Habitat Goals; or</u></li> <li>• <u>Protects stream identified as a Stream Conservation Target in the CLN</u></li> <li>• <i>(Protects Other Important Features) e.g. Nationally Important Marine Features</i></li> </ul>	<ul style="list-style-type: none"> <li>• EcoAtlas <a href="http://www.ecoatlas.org/regions/coregion/bay-delta">http://www.ecoatlas.org/regions/coregion/bay-delta</a></li> <li>• Conservation Lands Network (CLN) <a href="http://www.bayarealands.org/explorer/">http://www.bayarealands.org/explorer/</a></li> <li>• Center for Ecosystem Management and Restoration</li> </ul>
Water Supply and Water Quality	<ul style="list-style-type: none"> <li>• Protect urban water supply                             <ul style="list-style-type: none"> <li>○ Reservoir Catchment Area</li> <li>○ Aquifer recharge zone</li> <li>○ Critical stream</li> <li>○ Priority stream; or</li> </ul> </li> <li>• Support watershed health</li> </ul>	<ul style="list-style-type: none"> <li>• Greenbelt Mapper <a href="http://www.greenbelt.org/greenbelt-mapper/">http://www.greenbelt.org/greenbelt-mapper/</a></li> <li>• USFWS Critical Habitat Portal <a href="http://ecos.fws.gov/crithab/">http://ecos.fws.gov/crithab/</a></li> </ul>
Agricultural Resources and Economy	<ul style="list-style-type: none"> <li>• Supports agricultural economy/preserves land with soil important for food production                             <ul style="list-style-type: none"> <li>○ Farmland identified in Farmland Mapping and Monitoring Program</li> <li>○ Grazing Lands identified in FMMP</li> </ul> </li> <li>• Supportive of local or state agricultural policy</li> <li>• Completes contiguous area of farm or grazing lands</li> <li>• Supports production on soil with reduced environmental impacts from agriculture</li> </ul>	<ul style="list-style-type: none"> <li>• Greenbelt Mapper, CA Farmland Mapping and Monitoring Program <a href="http://www.greenbelt.org/greenbelt-mapper/">http://www.greenbelt.org/greenbelt-mapper/</a></li> <li>• General Plans/Other Land Use Plans</li> <li>• Greenbelt Mapper <a href="http://www.greenbelt.org/greenbelt-mapper/">http://www.greenbelt.org/greenbelt-mapper/</a></li> <li>• Local Data</li> </ul>

ATTACHMENT 3: PROPOSED PCA DESIGNATIONS

Table 2: Priority Conservation Area Benefits and Criteria

Benefit	Criteria Required and (Optional)	Data Sources for Evaluation
<p><b>Community Health</b></p> <p><i>GA</i></p> <p>→</p>	<ul style="list-style-type: none"> <li>• Improve access to neighborhood parks in areas with high park need</li> <li>• Increase/complete urban tree canopy</li> <li>• Increase urban tree cover in areas expected to experience urban heat island effect</li> <li>• Supports Local Climate Action Plan/Greening Plan Goals related to Urban Greening</li> <li>• Increase tree canopy, food access, and/or park access in Community of Concern</li> </ul>	<ul style="list-style-type: none"> <li>• ParkScore® Index <a href="http://parkscore.tpl.org/">http://parkscore.tpl.org/</a></li> <li>• Local Data/Analysis</li> <li>• Local Data (e.g. tree inventories)</li> <li>• Heat Island Effect Source</li> <li>• Local Climate Action Plans</li> <li>• MTC Communities of Concern <a href="http://geocommons.com/maps/118675">http://geocommons.com/maps/118675</a></li> </ul>
<p><b>Recreation</b></p>	<ul style="list-style-type: none"> <li>• Proposed Regional Trails               <ul style="list-style-type: none"> <li>○ Bay Trail</li> <li>○ Ridge Trail</li> </ul> </li> <li>• Acreage of regional park added</li> <li>• (Local data sources)</li> </ul>	<ul style="list-style-type: none"> <li>• Greenbelt Mapper <a href="http://www.greenbelt.org/greenbelt-mapper/">http://www.greenbelt.org/greenbelt-mapper/</a></li> </ul>
<p><b>Climate and Resilience</b></p>	<ul style="list-style-type: none"> <li>• Protect and/or Increase Areas with Carbon storage potential; or</li> <li>• Address Hazard Risk in Open Spaces (earthquake, flood, sea level rise)</li> </ul>	<ul style="list-style-type: none"> <li>• Greenbelt Mapper <a href="http://www.greenbelt.org/greenbelt-mapper/">http://www.greenbelt.org/greenbelt-mapper/</a></li> <li>• Conservation Lands Network (CLN) <a href="http://www.bayarealands.org/explorer/">http://www.bayarealands.org/explorer/</a></li> <li>• ABAG Earthquake Mapping Update <a href="http://quake.abag.ca.gov/projects/earthquake-mapping-update/">http://quake.abag.ca.gov/projects/earthquake-mapping-update/</a></li> <li>• NOAA Sea Level Rise and Coastal Flooding Impacts Map <a href="http://www.csc.noaa.gov/slr/viewer/#">http://www.csc.noaa.gov/slr/viewer/#</a></li> </ul>
<p><b>Compact Growth</b></p> <p>X</p> <p>X</p>	<ul style="list-style-type: none"> <li>• Protect land with open space benefits with high development pressure and adjacent open spaces;</li> <li>• <u>Support stable urban edges; or</u></li> <li>• Support adopted open space policy protection measures</li> </ul>	<ul style="list-style-type: none"> <li>• Greenbelt Mapper <a href="http://www.greenbelt.org/greenbelt-mapper/">http://www.greenbelt.org/greenbelt-mapper/</a></li> <li>• Greenbelt Mapper <a href="http://www.greenbelt.org/greenbelt-mapper/">http://www.greenbelt.org/greenbelt-mapper/</a></li> <li>• Local General Plans</li> </ul>

*BRISH*

# Natural Landscapes

## Description

Areas critical to the functioning of wildlife and plant habitats, aquatic ecosystems and the region's water supply and quality.

## Primary Benefits

Terrestrial (Land) Ecosystems, Aquatic (Water) Ecosystems, Water Supply and Quality

## Potential Co-Benefits

Climate and Resilience, Compact growth, recreation

## Examples

Critical habitat areas, wetlands targeted for restoration, riparian corridors, watershed land protection



Oak Woodland and Pond, Sunol



Uplands Watershed with Wildflower Field,  
San Mateo County

## Resources

### Conservation Lands Network

<http://www.bayarealands.org/explorer/>

### US Fish and Wildlife Service Critical Habitat Portal

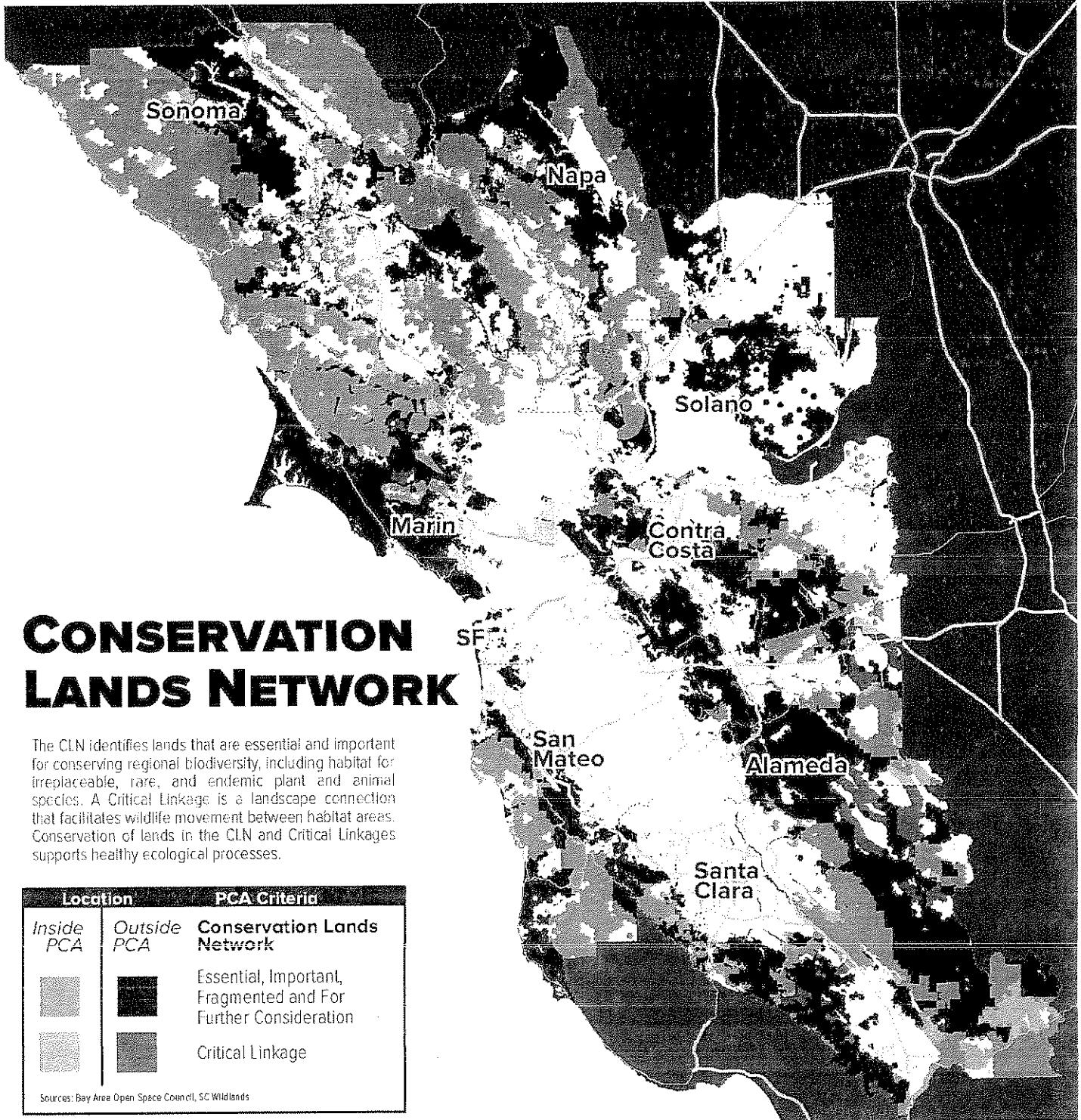
<http://ecos.fws.gov/crithab/>

### EcoAtlas

<http://www.ecoatlas.org/regions/ecoregion/bay-delta>



Evaluation Resource: Conservation Lands Network



# Agricultural Lands

## Description

Farmland, grazing land and timberland that support the region's agricultural economy and provide additional benefits such as habitat protection and carbon capture.

### Primary Benefits

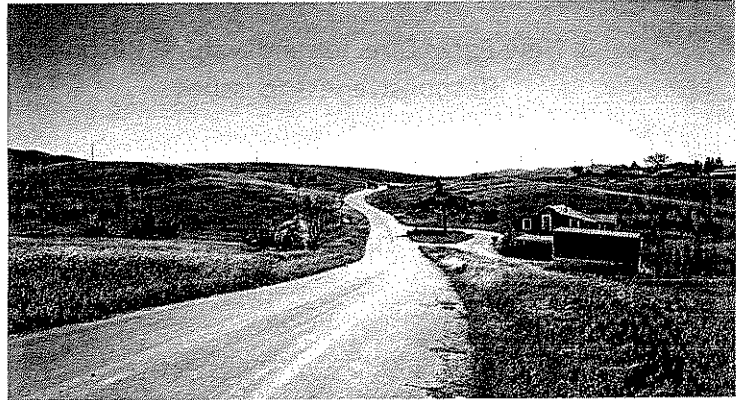
Agricultural Resources, Agricultural Economy

### Potential Co-Benefits

Wildlife habitat, water supply and quality, recreation, climate and resilience, compact growth

### Examples

Farmland, grazing land, timberlands



Grazing Land, Sunol



Chiala Farms, Morgan Hill

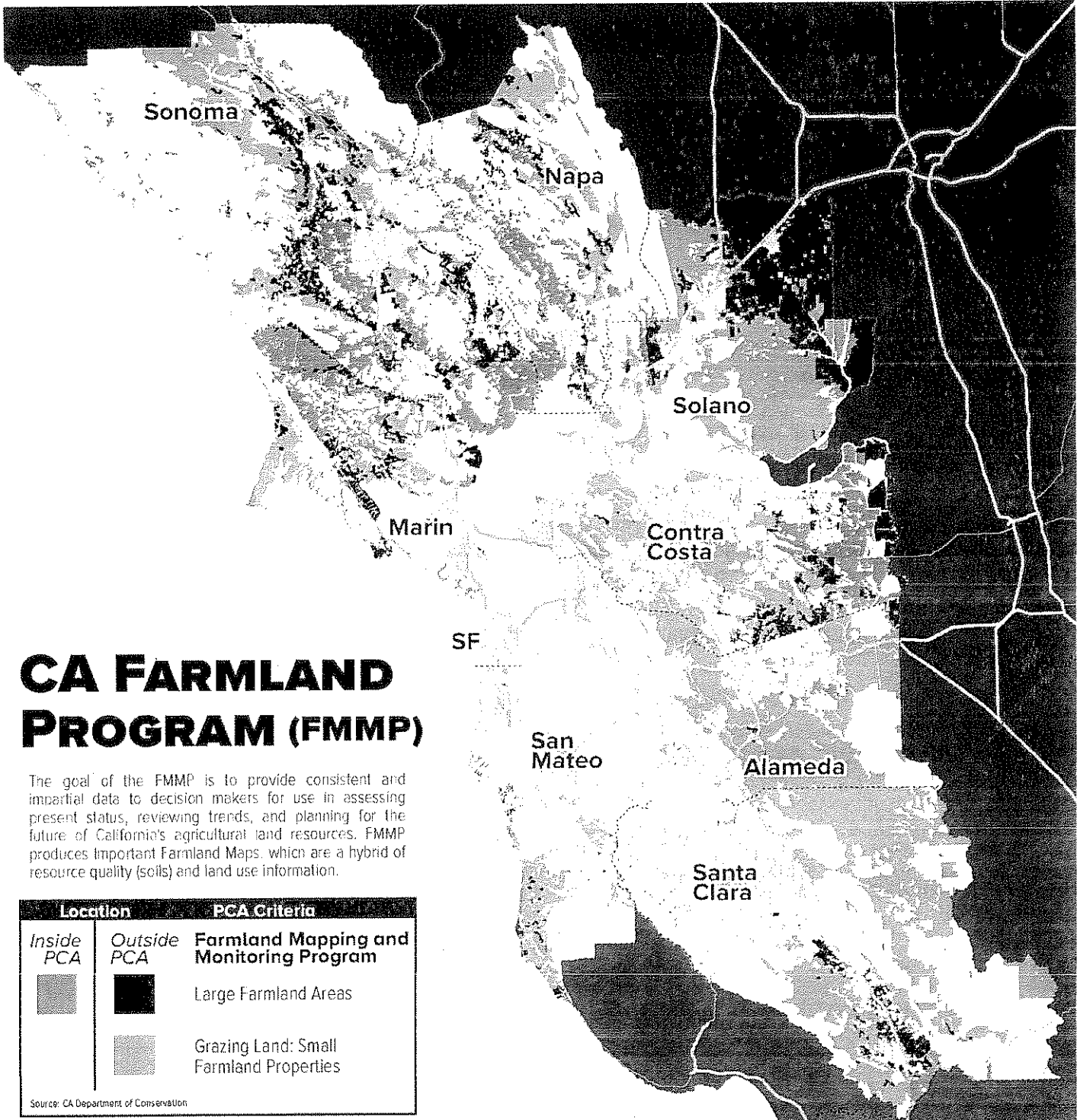
### Resources

Greenbelt Mapper

<http://www.greenbelt.org/greenbelt-mapper/>

Local General Plans

Evaluation Resource: CA Farmland Mapping and Monitoring Program



# Urban Greening

## Description

Existing and potential green spaces in cities that improve community health, capture carbon emissions, address stormwater, and enhance the public realm.

### Primary Benefits

Community Health, Recreation, Climate and Resilience

### Potential Co-Benefits

Water supply and quality, wildlife habitat, recreation

### Examples

Urban portion of riparian corridors, potential sites for parks and community gardens, urban forest and green street networks

### Resources

ParkScore Index

<http://parkscore.tpl.org/>

Local Climate Action and Urban Greening Plans



Urban Forest Expansion  
San Francisco

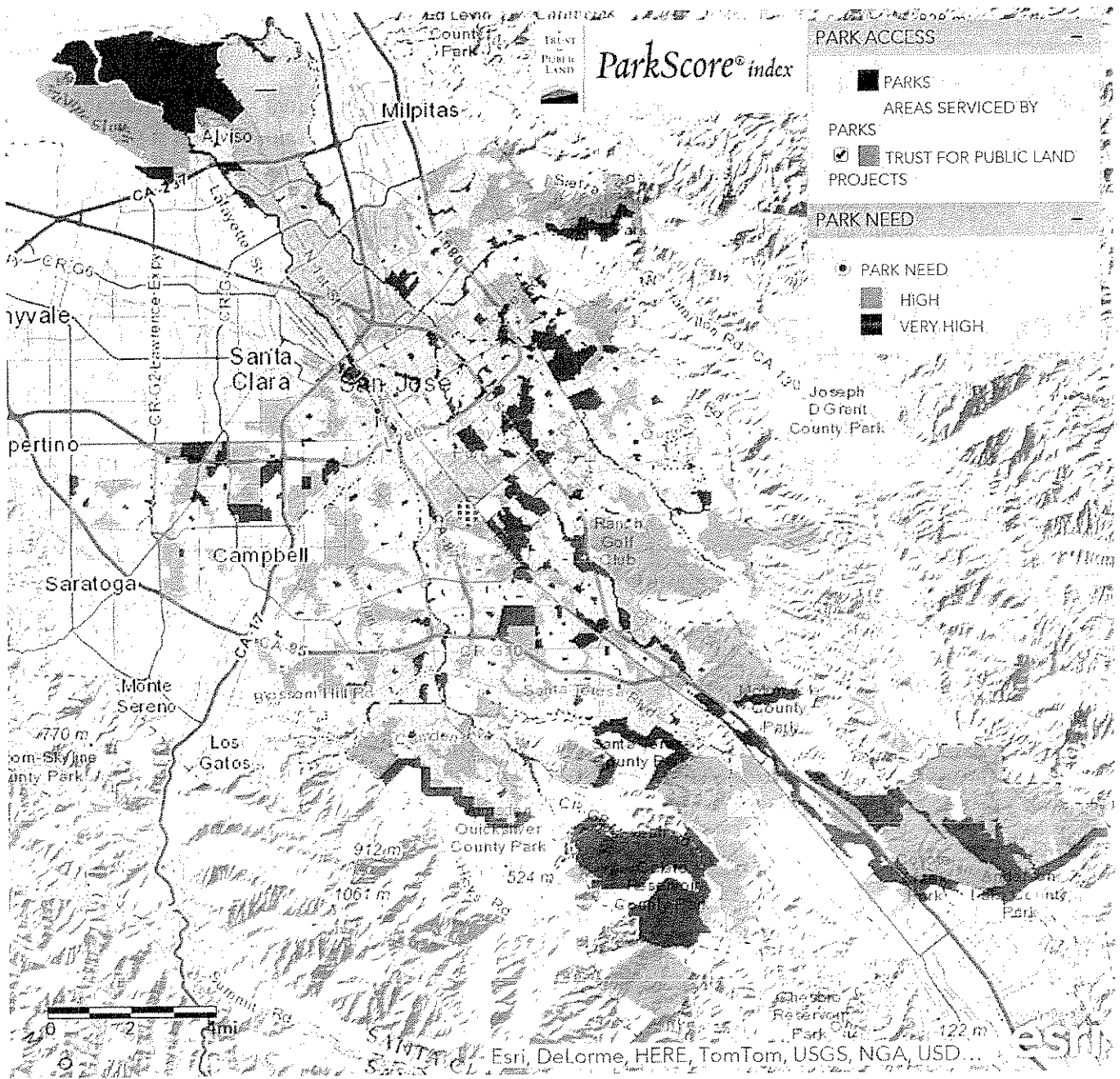


7<sup>th</sup> Street Mural, Garden and Play Area  
People's Grocery, Oakland

Evaluation Resource: Trust for Public Land Park Score Index

# Park Need in San Jose

## Trust for Public Land



# Regional Recreation

## Description

Existing and potential regional parks, trails, and other publicly accessible recreation facilities.

## Primary Benefit

Recreation

## Potential Co-Benefits

Wildlife habitat, water supply and quality, climate and resilience, community health, compact growth

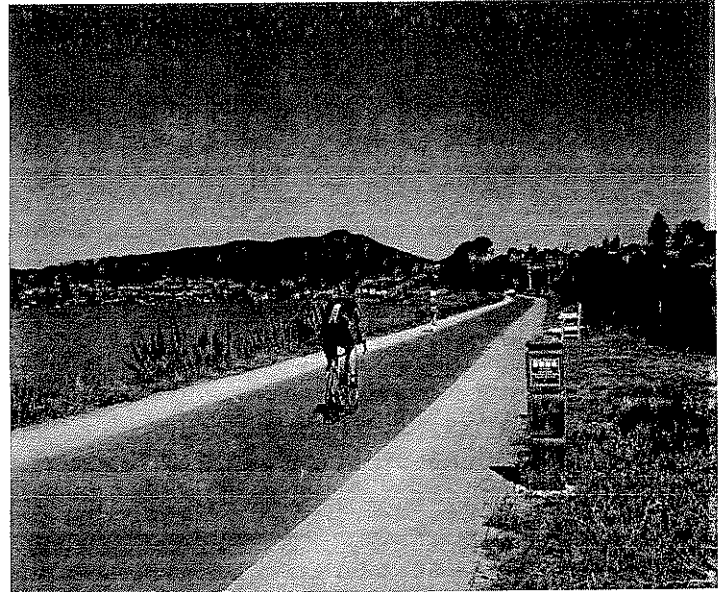
## Examples

Regional trail networks, areas for potential regional park expansion.

## Resources

Greenbelt Mapper (Regional Trails)

<http://www.greenbelt.org/greenbelt-mapper/>

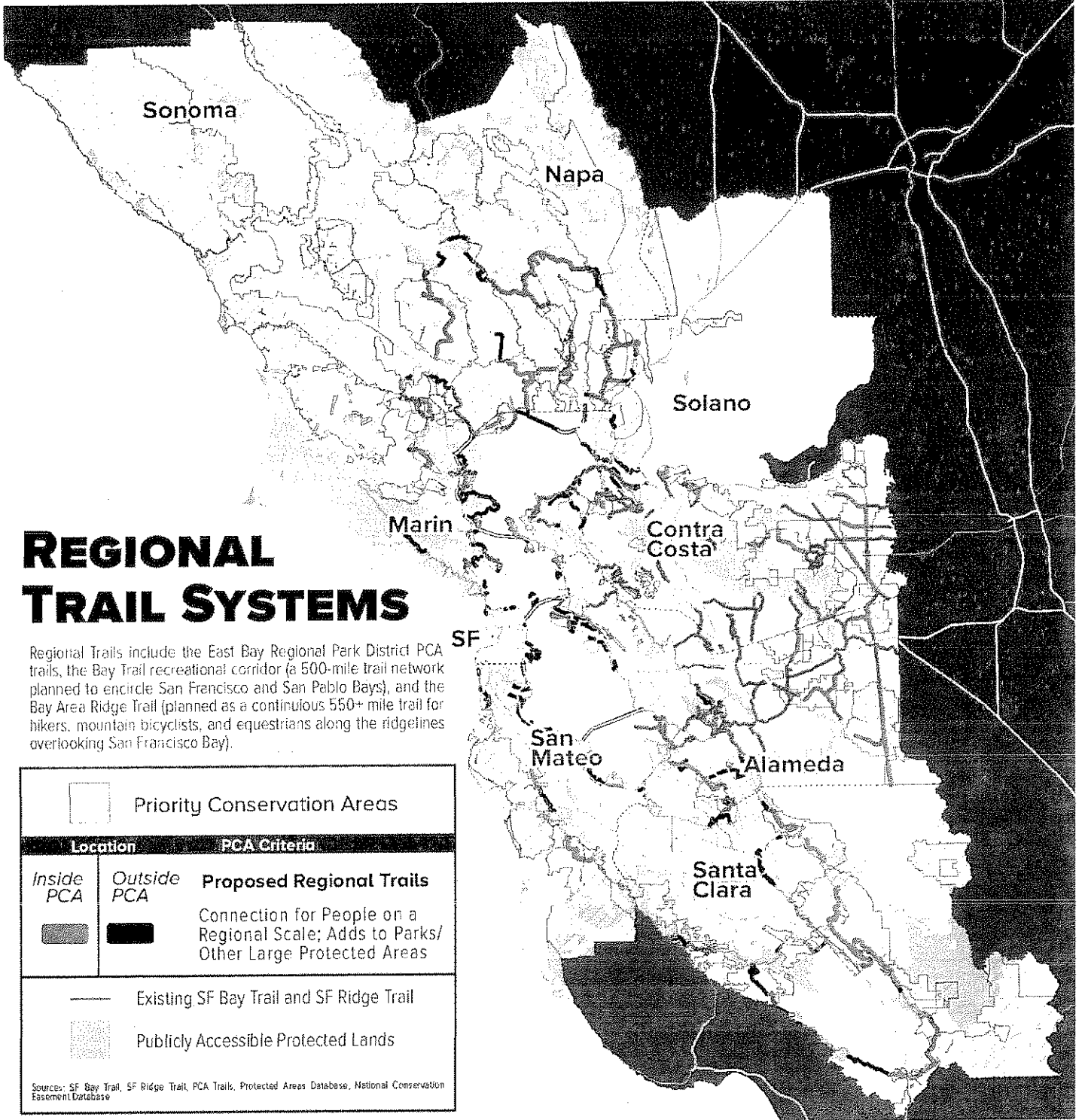


Bay Trail, Tiburon



Bay Area Water Trail

Evaluation Tool: Existing and Proposed Regional Trail Network (Greenbelt Mapper)



**ATTACHMENT 1**  
**Priority Conservation Area Designation**  
**Application Form**

Enter information in the spaces provided. E-mail this completed application form and attachments requested as part of this form to ABAG Planning **by May 30, 2015**. If e-mailing is not possible, a hard copy of materials can be mailed to PCA Applications, Association of Bay Area Governments, P.O. Box 2050, Oakland, CA 94604-2050.

**PART 1: AREA INFORMATION**

Proposed Name	
Description	
Location (include map and text description)	
Total Acreage	

**PART 2: SPONSOR(S)**

Lead Nominating Agency/Organization	
Staff Person	
Address	
Phone Number(s)	
E-mail address	
Partnering Agency(ies)/Organization(s)	

**PART 3: DESIGNATION**

**Selected Designation** – Select one or more designation for the proposed PCA

Natural Landscapes     Agricultural Lands     Urban Greening     Regional Recreation

**PART 4: BENEFITS**

**Primary Benefit(s)** – Select one or more benefits and co-benefits for the proposed PCA

---



---

**PART 5: ATTACHMENTS**

*Required*

1. Copy of adopted resolution by City Council, Board of Supervisors, or Open Space or Park District Board.
2. Attach a map showing the proposed general area boundaries and location. Include other relevant information, such as topography or an aerial photograph, to show the context for protection of this area.
3. Provide text, data, maps, etc. that demonstrate primary benefit(s) of the relevant designation and co-benefit(s).

*Optional*

4. Letters of Support from partner agencies or organizations.
5. Additional data, maps, supportive local policies.





**San Bruno Mountain Watch** • PO Box 53, Brisbane, CA 94005  
[www.mountainwatch.org](http://www.mountainwatch.org) • [sanbruno@mountainwatch.org](mailto:sanbruno@mountainwatch.org) • 415-467-6631  
SBMW is a non-profit 501c3 corporation

September 19, 2013

Dana Smith  
434 San Diego Ave  
Daly City, CA 94015-3818

Dear Dana,

I hope you enjoyed the San Bruno Mountain Watch newsletter in August, and that it gave you a sense of the good and effective work we are doing. There has been real progress on the Daly City Dunes, thanks to our hard working board members, staff and local volunteers.

*Very little of our work would be possible without the support of donors like you.*

During the past couple of years income from foundations has really fallen off, and we rely on individual donors to help make up the difference. Your contributions are important and necessary for our work.

Please consider making a significant donation to keep our work on San Bruno Mountain going. *Without your help, we will experience a significant reduction in our activities just at a time when we are on the brink of some real successes.*

Preserving open space and native habitats is so important! We need to continue to:

- Expand wetlands restoration at the base of the mountain;
- Restore more habitat on the grassy slopes of the mountain;
- Preserve the Daly City Dunes and Sign Hill;
- Lead efforts to bring natural resources management to the county park system; and
- Expand our education program to more middle schools and high schools around the mountain.

These activities only happen with your help and support. *Please consider a donation of \$75 or more, remembering that whatever you can give is appreciated, valued, and much needed.*

Best regards,

Ken McIntire  
Executive Director

*P.S. Our Native Plant Sale is on October 12<sup>th</sup>. See [www.mountainwatch.org](http://www.mountainwatch.org) for details.*



**San Bruno Mountain Watch** • PO Box 53, Brisbane, CA 94005  
[www.mountainwatch.org](http://www.mountainwatch.org) • [sanbruno@mountainwatch.org](mailto:sanbruno@mountainwatch.org) • 415-467-6631  
SBMW is a non-profit 501c3 corporation

September 19, 2013

Betty Schultz  
846 Skyline Dr  
Daly City, CA 94015

Dear Betty,

I hope you enjoyed the San Bruno Mountain Watch newsletter in August, and that it gave you a sense of the good and effective work we are doing. There has been real progress on the Daly City Dunes, thanks to our hard working board members, staff and local volunteers.

*Very little of our work would be possible without the support of donors like you.*

During the past couple of years income from foundations has really fallen off, and we rely on individual donors to help make up the difference. Your contributions are important and necessary for our work.

Please consider making a significant donation to keep our work on San Bruno Mountain going. *Without your help, we will experience a significant reduction in our activities just at a time when we are on the brink of some real successes.*

Preserving open space and native habitats is so important! We need to continue to:

- Expand wetlands restoration at the base of the mountain;
- Restore more habitat on the grassy slopes of the mountain;
- Preserve the Daly City Dunes and Sign Hill;
- Lead efforts to bring natural resources management to the county park system; and
- Expand our education program to more middle schools and high schools around the mountain.

These activities only happen with your help and support. *Please consider a donation of \$75 or more, remembering that whatever you can give is appreciated, valued, and much needed.*

Best regards,

Ken McIntire  
Executive Director

*P.S. Our Native Plant Sale is on October 12<sup>th</sup>. See [www.mountainwatch.org](http://www.mountainwatch.org) for details.*



**San Bruno Mountain Watch** • PO Box 53, Brisbane, CA 94005  
[www.mountainwatch.org](http://www.mountainwatch.org) • [sanbruno@mountainwatch.org](mailto:sanbruno@mountainwatch.org) • 415-467-6631  
SBMW is a non-profit 501c3 corporation

September 19, 2013

Anita Ross  
488 Southhill Blvd  
Daly City, CA 94014-1461

Dear Anita,

I hope you enjoyed the San Bruno Mountain Watch newsletter in August, and that it gave you a sense of the good and effective work we are doing. There has been real progress on the Daly City Dunes, thanks to our hard working board members, staff and local volunteers.

*Very little of our work would be possible without the support of donors like you.*

During the past couple of years income from foundations has really fallen off, and we rely on individual donors to help make up the difference. Your contributions are important and necessary for our work.

Please consider making a significant donation to keep our work on San Bruno Mountain going. *Without your help, we will experience a significant reduction in our activities just at a time when we are on the brink of some real successes.*

Preserving open space and native habitats is so important! We need to continue to:

- Expand wetlands restoration at the base of the mountain;
- Restore more habitat on the grassy slopes of the mountain;
- Preserve the Daly City Dunes and Sign Hill;
- Lead efforts to bring natural resources management to the county park system; and
- Expand our education program to more middle schools and high schools around the mountain.

These activities only happen with your help and support. *Please consider a donation of \$75 or more, remembering that whatever you can give is appreciated, valued, and much needed.*

Best regards,

Ken McIntire  
Executive Director

*P.S. Our Native Plant Sale is on October 12<sup>th</sup>. See [www.mountainwatch.org](http://www.mountainwatch.org) for details.*



**San Bruno Mountain Watch** • PO Box 53, Brisbane, CA 94005  
[www.mountainwatch.org](http://www.mountainwatch.org) • [sanbruno@mountainwatch.org](mailto:sanbruno@mountainwatch.org) • 415-467-6631  
SBMW is a non-profit 501c3 corporation

September 19, 2013

George Rehmet  
Maridel Ordoná-Rehmet  
168 Melissa Circle  
Daly City, CA 94014

Dear George and Maridel,

I hope you enjoyed the San Bruno Mountain Watch newsletter in August, and that it gave you a sense of the good and effective work we are doing. There has been real progress on the Daly City Dunes, thanks to our hard working board members, staff and local volunteers.

*Very little of our work would be possible without the support of donors like you.*

During the past couple of years income from foundations has really fallen off, and we rely on individual donors to help make up the difference. Your contributions are important and necessary for our work.

Please consider making a significant donation to keep our work on San Bruno Mountain going. *Without your help, we will experience a significant reduction in our activities just at a time when we are on the brink of some real successes.*

Preserving open space and native habitats is so important! We need to continue to:

- Expand wetlands restoration at the base of the mountain;
- Restore more habitat on the grassy slopes of the mountain;
- Preserve the Daly City Dunes and Sign Hill;
- Lead efforts to bring natural resources management to the county park system; and
- Expand our education program to more middle schools and high schools around the mountain.

These activities only happen with your help and support. *Please consider a donation of \$75 or more, remembering that whatever you can give is appreciated, valued, and much needed.*

Best regards,

Ken McIntire  
Executive Director

*P.S. Our Native Plant Sale is on October 12<sup>th</sup>. See [www.mountainwatch.org](http://www.mountainwatch.org) for details.*